

# EQSS Model6253 – OverWatch™ Zoomlion



**\*\* Failure to follow this installation manual will void warranty \*\***



REV 1.3

14/02/2024

Model6253 OverWatch™ Installation Manual

Document # DO001551

AUTHORS:

Kieren Grogan  
Bhavani Kacharapu

AUTHORISED BY:

Kieren Grogan

CHECKED BY:

Andrew Donegan

DOCUMENT ABSTRACT:

This installation manual details the manufacturer's installation instructions for installing the Model6253 OverWatch on a Zoomlion electric slab scissor lift.

PRODUCT NAME:

Model6253 OverWatch Operator Detection System

REFERENCE DOCUMENTS:

DO0001195 Model6253 OverWatch User Manual

CURRENT DOCUMENT REVISION:

1.3

REVISION INFORMATION:

- 1.0 Initial Document Creation for installation on a Zoomlion control box
- 1.1 Update of installation manual and instructions for plug and play installation
- 1.3 Inclusion of mounting guard V2 and update of configuration procedures

## Important Information

Information contained in this publication regarding this device's applications and the like, is provided only for your convenience and may be superseded by updates. It is your responsibility to ensure that the application or our equipment meets with your specifications.

EQUIPMENT SAFETY SYSTEMS MAKE NO REPRESENTATIONS OR WARRANTIES OF ANY KIND, WHETHER EXPRESSED OR IMPLIED, WRITTEN OR ORAL, STATUTORY OR OTHERWISE, RELATED TO THE INFORMATION, INCLUDING, BUT NOT LIMITED TO, IT'S CONDITION, QUALITY, PERFORMANCE, MERCHANTABILITY OR FITNESS FOR PURPOSE.

Equipment Safety Systems disclaims all liability arising from this information and its use. Use of Equipment Safety Systems' products as critical components in life support systems is not authorised except with express written approval by Equipment Safety Systems. No licenses are conveyed, implicitly or otherwise, under any Equipment Safety Systems intellectual property rights.



N23041

This is a class A product certified to AS/NZS CISPR 22:2006. In a domestic environment this product may cause radio interference in which case the user may be required to take adequate measures.



## Table of Contents

Preparation .....	5
Required Tools .....	5
Installation Time .....	5
Installation Instructions .....	6
Operator Sensor .....	6
Control Module .....	9
Post Installation Configuration .....	16
Overview .....	16
Minimum system requirements .....	16
Wi-Fi Connection & Web Page Access .....	16
Machine Model Selection .....	17
Installation Test.....	18
Change Model Configuration .....	19
System Settings.....	20
Default Parameters .....	20
Polarity and Input Style.....	21
Harness Drawing AS002212 .....	22
Replacement Parts.....	23

## Preparation

### Required Tools

The OverWatch has been designed to be fitted using basic workshop tools. Shown below is a list of tools required to complete the installation.

Item	Tool / Description
1	Electric Drill
2	Centre punch
3	Hammer
4	Side Cutters
5	Drill 3.2mm
6	Drill 5.2mm
7	Step Drill (5 – 30mm)
8	Metric sockets or spanners
9	Needle nose pliers
10	Screw drivers
11	Paint – Green


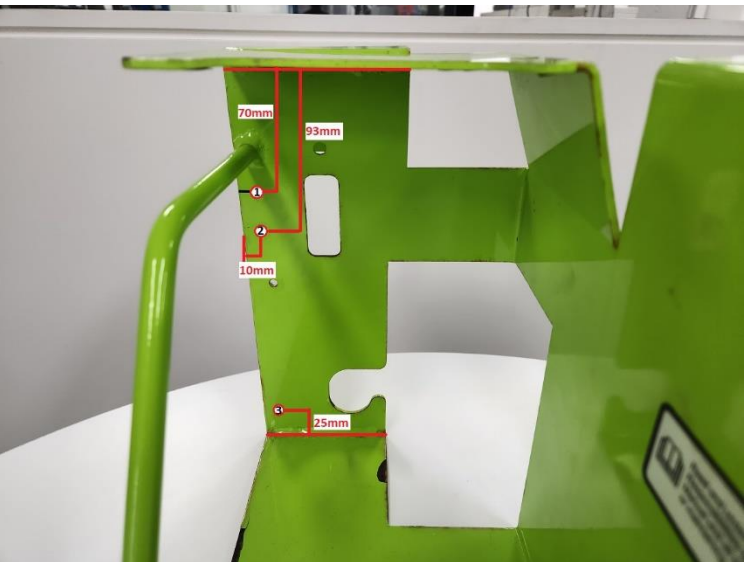
### Installation Time

The suggested time required to install the OverWatch is as detailed below.

Task	Estimated Time (Minutes)
Drilling of all mounting holes for the various components	10
Mechanical assembly	10
Electrical assembly	10
Post installation system tests	10
<b>Total</b>	<b>40</b>

# Installation Instructions

## Operator Sensor

Step	Description	Diagram
1.	Remove the Joystick controller from the metal housing.	
2.	<p>Drill three <b>5.2mm</b> holes into the metal housing in the location as shown. These holes are required to mount the operator sensor bracket and the P-Clip which supports the operator sensor cable.</p> <p><b>Hole 1:</b> <b>70mm</b> distance from the top vertical edge to the centre of the hole.</p> <p><b>Hole 2:</b> <b>93mm</b> distance from the top vertical edge to the centre of the hole.</p> <p><b>Hole 3:</b> <b>25mm</b> distance from the bottom edge to the centre of the hole.</p> <p><b>Note:</b> Make sure to countersunk holes to mount the operator sensor bracket.</p>	

3.

Mount the operator sensor bracket to the metal enclosure using the nuts, bolts and washers.

Use the following hardware from the kit.

2 x M5 x 16mm Countersunk Head Screw

2 x M5 Lock Nuts

2 x M5 Washers

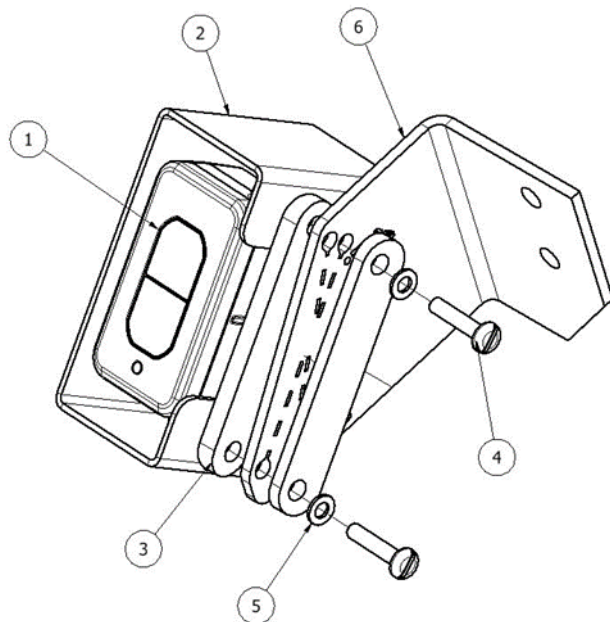


4.

#### Sensor Mounting Guard V1 (ME001794)

Mount the operator sensor in the **45-degree position** by using the positioning wedges, sensor guard, M4 washers, and bolts.

The orientation of the wedge blocks is critical for the correct positioning of the operator sensor, make sure that the sensor is angled, such that it is **twisted outwards** from the joystick controller.



#### PARTS LIST

ITEM	QTY	PART NUMBER	DESCRIPTION
1	1	AS001910	OverWatch Operator Sensor
2	1	ME001794	OverWatch Sensor Guard
3	2	ME001798	OverWatch Alignment Wedges
4	2	FA001422	M4 x 20mm Butt Screw
5	2	FA001235	M4 Plain Washer
6	1	ME001818	Operator Sensor Mounting Bracket

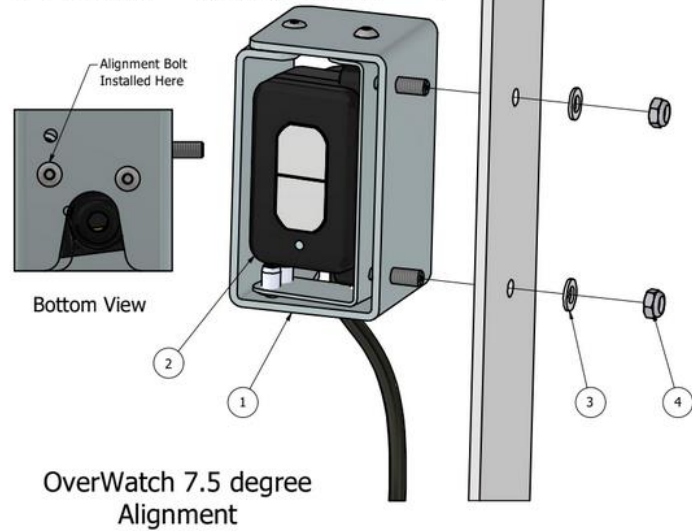
5.

### Sensor Mounting Guard V2 (AS002326)

This guard (AS002326) supersedes the original V1 design. Attach the guard in position using the M5 nuts and washers. Make sure that the sensor is on the 7.5-degree angle, such that it is twisted outwards from the joystick controller.

**The 7.5-degree twist is achieved by rotating the sensor inside the assembly and using the bolt hole as show in the image.**

PARTS LIST			
ITEM	QTY	STOCK NUMBER	DESCRIPTION
1	1	AS002326	Sensor Mounting Guard V2
2	1	AS001910	OverWatch Operator Sensor
3	2	FA001174	Washer, Plain, M5, 304 St. St.
4	2	FA001219	Nut, Hex, M5 x 0.8mm, Nylock



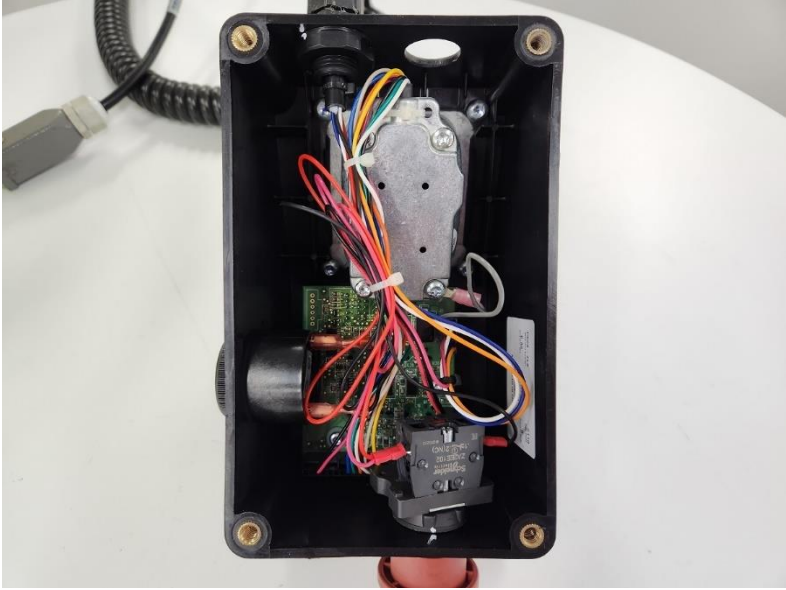
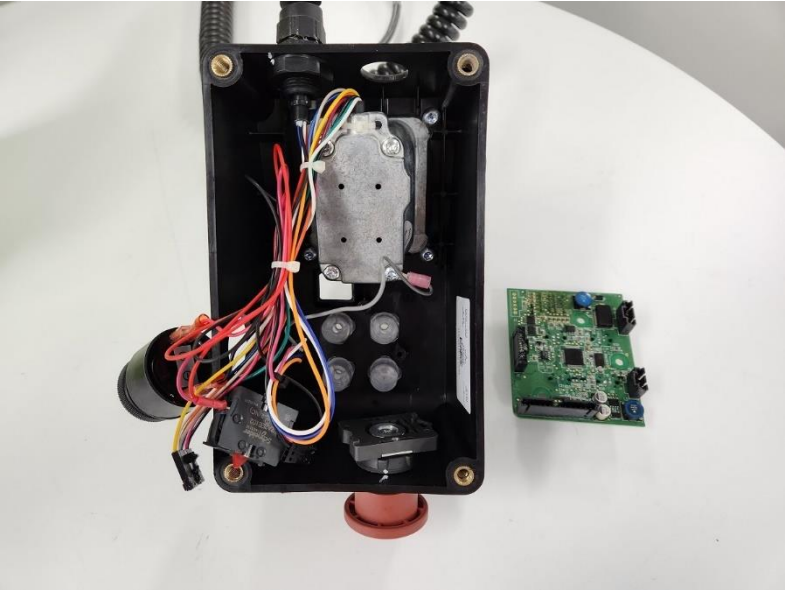
6.

Route the operator sensor cable as shown in the diagram. Use a P-Clip to secure the cable to the metal enclosure.

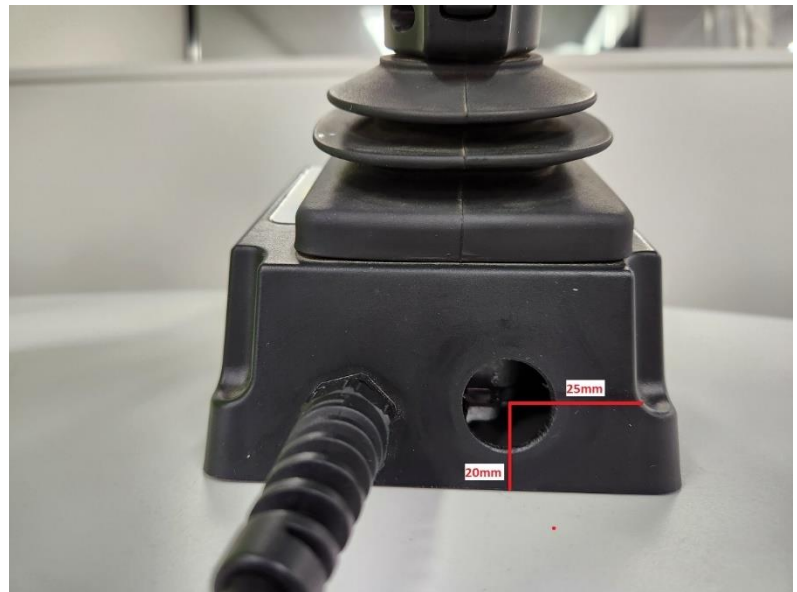




## Control Module

Step	Description	Diagram
1.	Remove the bottom plastic cover from the Joystick to expose the inside wiring and electronics.	
2.	Remove the Buzzer, E-Stop, and the controller circuit board from the plastic enclosure.	

3. Drill a **20mm** hole to run the operator sensor M20 Gland into the plastic joystick enclosure. The position of the hole is detailed as in the image. It is recommended to use a step drill for this hole, as it is running through plastic material.



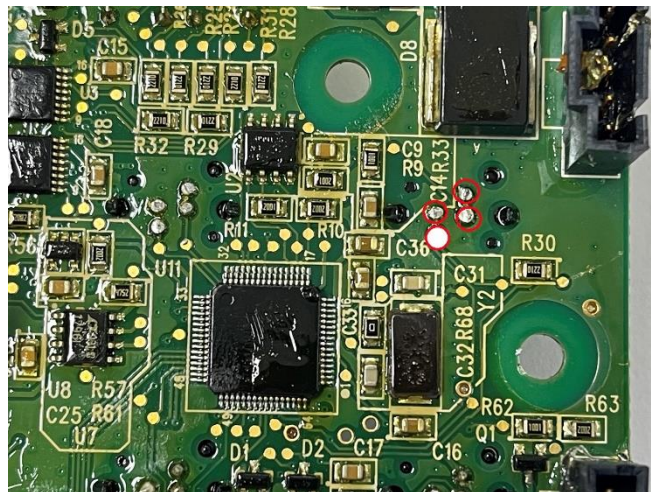
4. Use a fine metal pick to clean the area shown in the red circles, on the adjacent image, to allow access to the pins. This process removes the conformal coating on the PCB and allows electrical access to the drive, elevate and horn connections on the circuit joystick board.



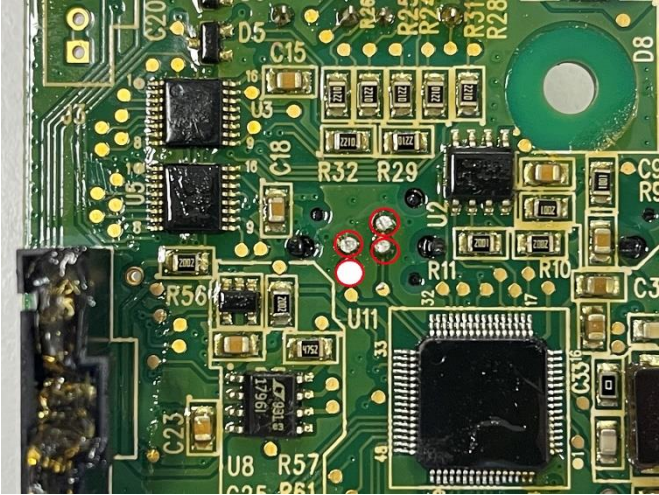

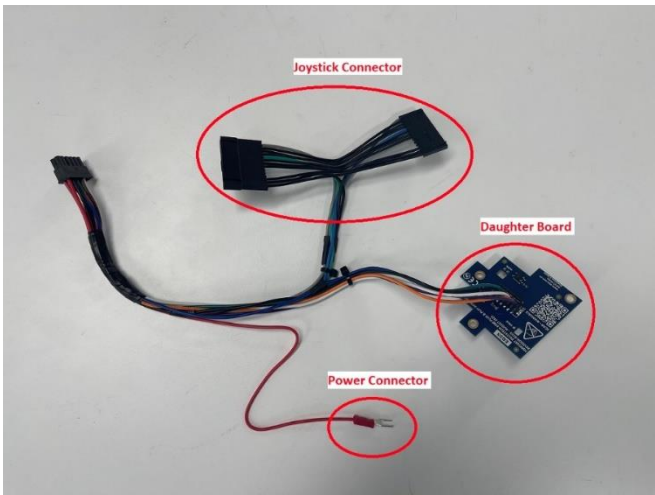
- |    |   |
|----|---|
| 5. | Use a fine pair of side cutters to trim down the signal pins. These connections must be trimmed to be as flat as possible so that the spring pin from the plug and play board can make suitable contact with the terminal |
|----|---|



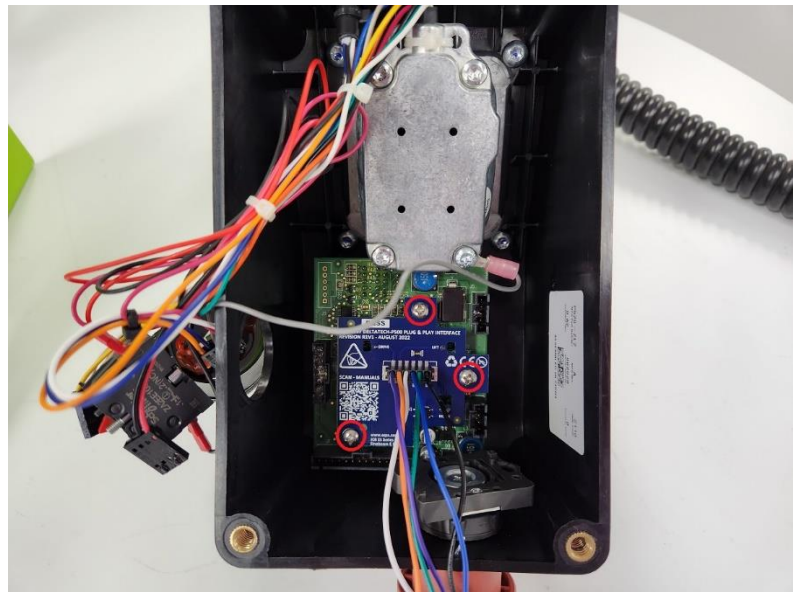
- |    |   |
|----|---|
| 6. | Trim down the <b>Elevate</b> signal pin. This pin is located as displayed in the image. Using a fine pair of side cutters make sure that the pin is trimmed flat. |
|----|---|



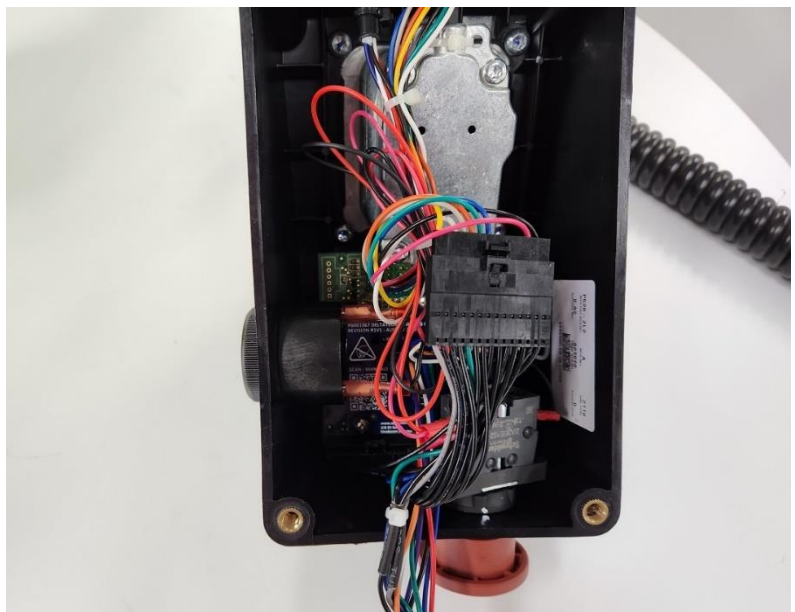


7.	Trim down the <b>Drive</b> signal pin. This pin is located as displayed in the adjacent image. Using a fine pair of side cutters make sure that the pin is trimmed flat.	
8.	Trim down the two <b>Horn</b> signal pins. These pins are located as displayed in the adjacent image. Using a fine pair of side cutters make sure that the pins are trimmed flat.	
9.	Wiring connections are made with the <b>AS002212</b> harness.	

10. Mount the Overwatch circuit board on top of joystick circuit board. Using the provided screws and spacers in the kit. Make sure that the board is sitting in the correct position and the spring pins are contacting the joystick circuit board signal pins. Use the cut-outs next to each spring pin to inspect that the contact is solid with the joystick board.



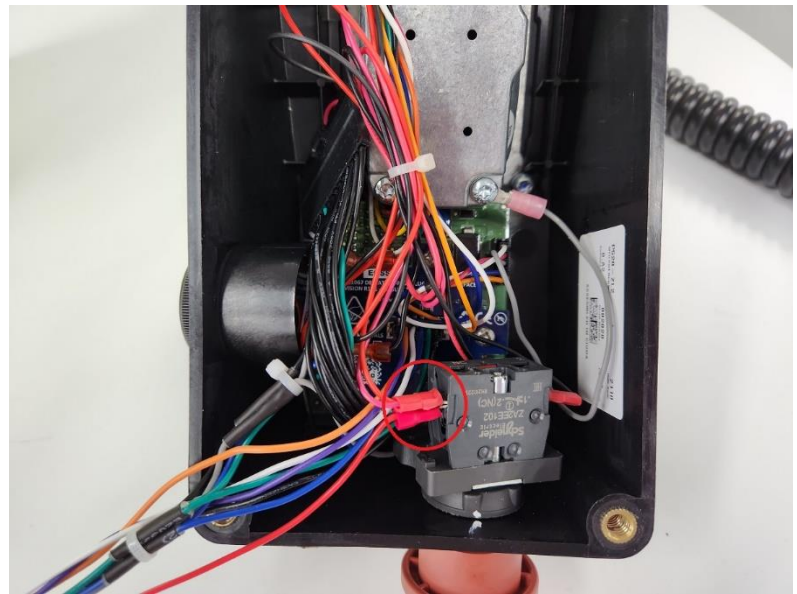
11. Install the Overwatch joystick connectors in between the joystick and the control box circuit board. Visually check that all pins from the original joystick connector have a corresponding cable on the Overwatch harness. Reconnect the other connectors, which were disconnected in step 2 to the control box circuit board.



12.

At the back of the E-Stop, install the OverWatch Red Power cable to terminal 1 of the E-Stop.

**Note:** This cable might need to be changed to terminal 2 if the Overwatch is powered with the E-Stop pushed in.



13.

Cut the plastic cover at least **5mm** deeper to close the control box properly as shown in the image.

**Note:** Make sure to cut the plastic cover exactly where the operator sensor cable gland is located.



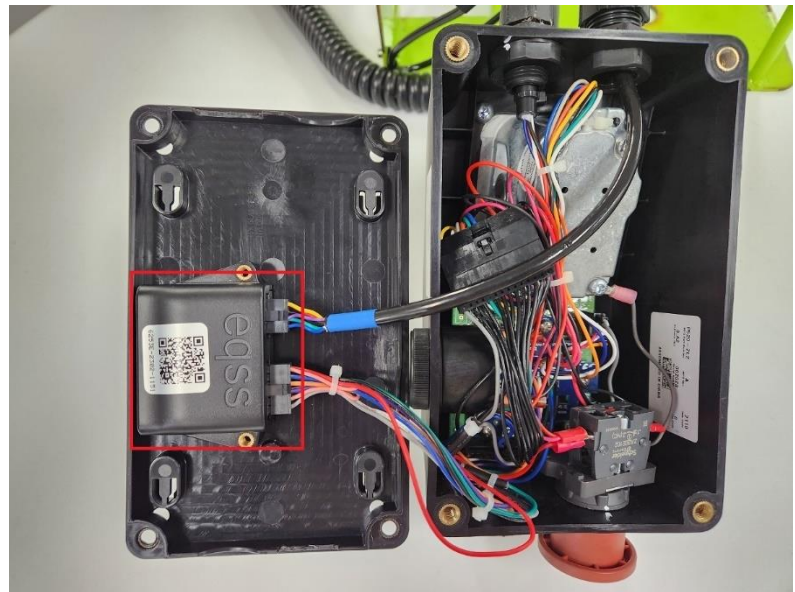


14.

Mount the OverWatch ECU inside the joystick control box back plastic cover by using the adhesive Velcro tape.

Run the operator sensor cable through the predrilled 20mm hole and secure the cable gland.

Connect the 8-pin connector from the operator sensor and the 12-pin connector from the overwatch loom to the ECU.



15.

Re-assemble the joystick control box and mount to the metal shroud.

Make sure the operator sensor cable runs clear to the joystick enclosure and tighten the M20 gland to seal the cable entry point.



# Post Installation Configuration

## Overview

After the system has been installed it must be configured with the parameters to suit the machine. Follow the instructions below to configure the OverWatch.

## Minimum system requirements

Any smart phone, tablet or laptop that meets the following requirements:

- The device can connect to a Wi-Fi access point
- The device has an up to date web browser installed. Firefox, Chrome or Safari are recommended.

## Wi-Fi Connection & Web Page Access

To enable the Wi-Fi connection on the OverWatch to complete the configuration follow the steps below.

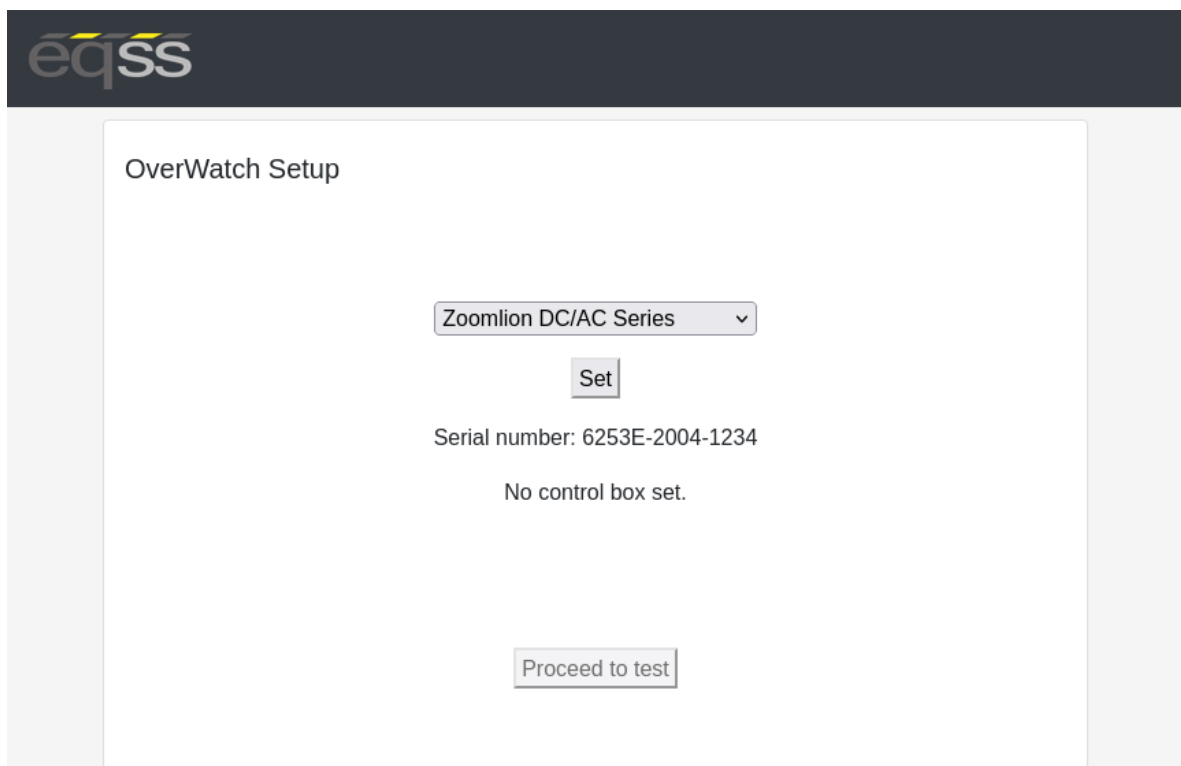
1. Power down the platform control box with the ESTOP
2. Wait 5 seconds
3. Power up the platform control box with the ESTOP
4. While standing **in front of the operator sensor**, switch on the OverWatch
5. As the welcome chime starts to play, cover the sensor. The LED will flash white then black to acknowledge.
6. Remove your hand from the sensor. The LED will flash white then black to acknowledge.
7. After covering then uncovering the sensor this way 2 more times, "Wi-Fi On" will be announced
8. On your Wi-Fi enabled device (laptop, tablet, smartphone, etc), show the available wireless networks
9. Select the wireless network (starts with "overwatch") to connect to the OverWatch
10. When prompted, enter the **password 12345678**
11. Open your preferred web browser (Chrome, Firefox, Safari)
12. Enter the following into the address bar <http://192.168.4.1> to open the OverWatch main page



## Machine Model Selection

Follow the instructions below to configure the OverWatch.

1. Select the Setup option
2. If there is a password field at the bottom of the page, follow the instructions in Change Model Configuration to obtain the password and enter the password field
3. Select the EWP Model from the drop-down list and click Set
4. Click on Proceed to test to begin the installation test



eqss

OverWatch Setup

Zoomlion DC/AC Series ▼

Set

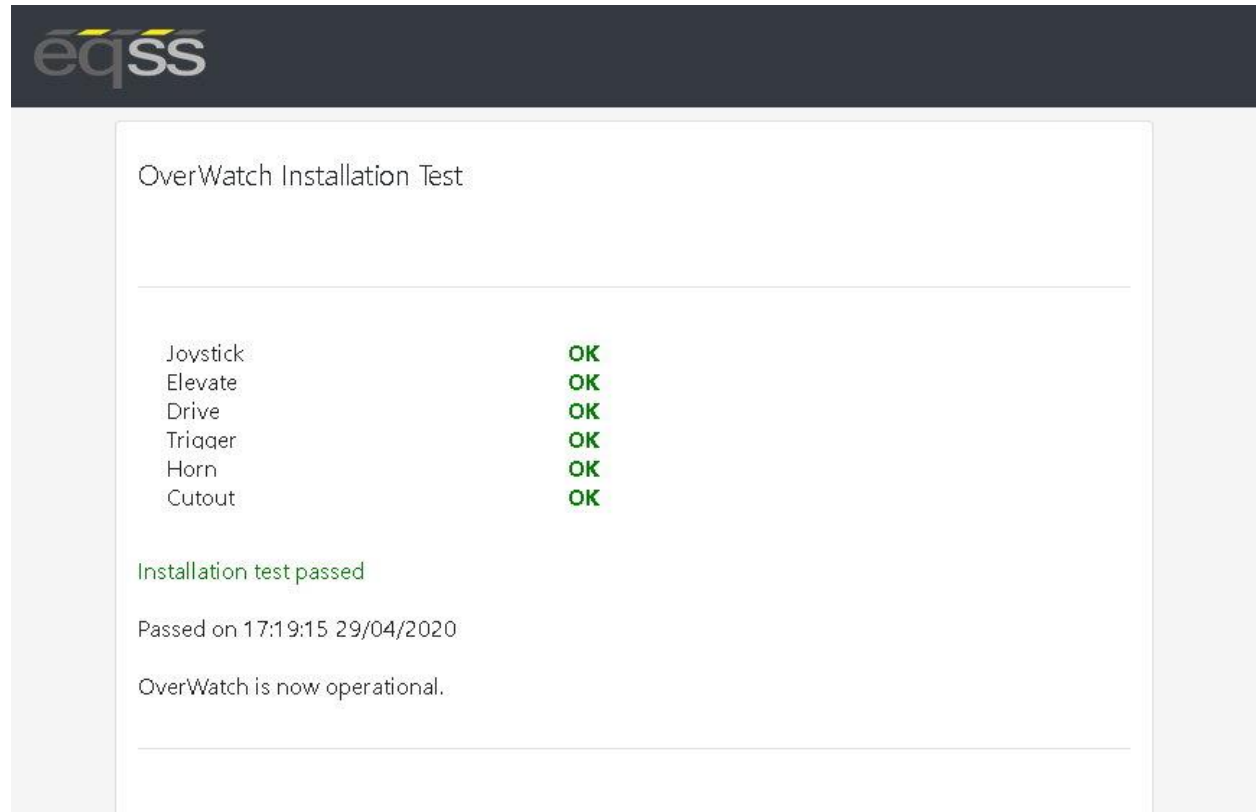
Serial number: 6253E-2004-1234

No control box set.

Proceed to test

## Installation Test

After the model configuration has been set or updated an Installation Test must be performed. This will ensure the installation has been correctly performed and the OverWatch is functioning correctly. Follow the instructions on the web page to complete the Installation Test.



The screenshot shows a web interface for the 'OverWatch Installation Test'. At the top is the eqss logo. Below it, the title 'OverWatch Installation Test' is displayed. A table lists six components and their status, all marked as 'OK' in green. Below the table, a green message states 'Installation test passed', followed by the timestamp 'Passed on 17:19:15 29/04/2020' and the confirmation 'OverWatch is now operational.'.

Joystick	OK
Elevate	OK
Drive	OK
Tripper	OK
Horn	OK
Cutout	OK

Installation test passed

Passed on 17:19:15 29/04/2020

OverWatch is now operational.

## Change Model Configuration

To reconfigure the OverWatch for a different model requires an authorisation password. The authorisation password is generated from the EQSS website. The EQSS website requires a login username and password, contact EQSS for these details.

Follow the instructions below to obtain an authorisation password. It is important to note that each ECU has a unique serial number and a unique password.

1. Open your web and enter the following into the address bar <http://www.eqss.com.au/overwatch> to open the Login page
2. Enter your username and password
3. Enter the EUC serial number which is shown on the setup page or on the ECU serial number sticker, also enter the owner and model details of the EWP and then click Generate Hash
4. The generated Hash code or password can be used to change the model configuration



### Details

Name	John Smith
Email	john.smith@company.com
Phone	+61 9 9999 9999
EQSS Overwatch Serial Number	6253E-2004-0000
Scissor Lift Model	Zoomlion DC/AC Series
Hash	50244

## System Settings

### Default Parameters

The OverWatch is configured with the following default parameters.

Setting Name	Description	Default
max_safe_velocity	This is the velocity threshold for the cutout in cm/s for drive mode.	95
max_safe_displacement	This is the maximum permitted distance in cm the operator may be away from the calibration position in drive mode.	50
max_safe_velocity_elevate	This is the velocity threshold for the cutout in cm/s for elevate mode.	75
max_safe_displacement_elevate	This is the maximum permitted distance in cm the operator may be away from the calibration position in elevate mode.	50
fwddispadj	The proportion of the calibration distance toward the sensor permitted to the operator.	0.7
fwdveloadj	The coefficient to apply to the maximum allowable velocity when the movement of the operator is toward the sensor.	1.0
zone_obstruction	If the lidar sensor reading is below this, the lidar is considered to be obstructed (with paint or thick coat of dust) and the system is cutout until the obstruction is cleared.	5
zone_minimum	The minimum calibration distance. If the operator is closer to the sensor than this "operator zone" will be announced.	17
zone_maximum	The maximum calibration distance. If the operator is further from the sensor than this "operator zone" will be announced.	120
adc_elevate_threshold	Threshold value for the elevate ADC input.	500
adc_drive_threshold	Threshold value for the drive ADC input.	500
adc_trigger_threshold	Threshold value for the trigger ADC input.	100
adc_joystick_fwd_threshold	Forward threshold value for the joystick ADC input.	900
adc_joystick_bwd_threshold	Backward threshold value for the joystick ADC input.	1100
throttle_time	Period after the trigger is pressed (ms) during which initial velocity reading is computed.	500
driving_state_timeout	Mode selection switch timeout (ms)	7000

## Polarity and Input Style

The table below describes each setting

Setting Name	Description	Default
joystick_drive_forward	Direction of joystick to move machine forward	forward
joystick_elevate_upward	Direction of joystick to move machine upwards	forward
elevate_polarity	Direction of signal logic	low
drive_polarity	Direction of signal logic	low
trigger_polarity	Direction of signal logic	low
joystick_polarity	Direction of signal logic	low
driving_state_input	Direct or timer based	direct

# Harness Drawing AS002212

**Revisions**

Rev.	Date	Author	Description
1.0	13/9/22	Andrew Donegan	Initial Design
1.1	20/09/2022	Andrew Donegan	Include all link wires on the 14 pin connectors

Final Assembly Photo: <https://drive.google.com/file/d/1JWwXoIdzm5nPschoVdpd0t1-gRUD6S/view>  
Please Note: The Photo Shown Has The PCB Connected To The Loose Wires

From	To	Conductor	Color	Gauge	Notes
C1_OW.1	ST1_PWR	W25 Red	Red	22 AWG	OW_PWR
C1_OW.2	ST1_GND	W1 Black	Black	22 AWG	OW_GND
C1_OW.3	ST1_DM	W19 Green	Green	22 AWG	OW_DM_SS
C1_OW.4	ST1_DN	W19 Green	Green	22 AWG	OW_DM_SS
C1_OW.5	ST1_OUT	W29 Pink	Pink	24 AWG	OW_DM_ECU1
C1_OW.6	ST1_IN	W29 Pink	Pink	24 AWG	OW_DM_ECU2
C1_OW.7	ST1_ELE	W24 White	White	22 AWG	OW_HORN
C1_OW.8	ST1_DRV	W26 Pink	Pink	24 AWG	OW_AUX_IN
C1_OW.9	ST1_DM	W16 Blue	Blue	22 AWG	OW_AUX_OUT
C1_OW.10	ST1_DN	W22 Orange	Orange	22 AWG	OW_ELE
C1_OW.11	ST1_OUT	W23 Violet	Violet	22 AWG	OW_DRV
C1_OW.12	ST1_IN	W27 Pink	Pink	24 AWG	OW_TEST
C1_OW.13	ST1_ELE	W13 Gray	Gray	22 AWG	OW_JOY
C1_OW.14	ST1_DRV	W13 Gray	Gray	22 AWG	OW_JOY

**Notes:**

- Small Cable Tie Here
- Strip 5mm and Tin(Solder) All 6 Loose Wires
- Use Two Lengths of Pink 24 AWG Wire Here. Do Not Splice. See Final Assembly Photo For Details
- Sell All Solids Join Into One Blue Heartbreak

## Replacement Parts

Replacement parts for this OverWatch kit are available from EQSS, please email [sales@eqss.com.au](mailto:sales@eqss.com.au)

Shown below are the part numbers for the major components included in this model specific kit.

Part Number	Description
AS002273	OverWatch - Complete kit for Zoomlion DC/AC Series Control Box
AS001910	OverWatch - Operator Sensor with M20 gland
AS001916	OverWatch - Electronic Control Unit (ECU)
AS002212	OverWatch – Zoomlion Harness
AS002326	OverWatch - Sensor Guard V2
ME001818	OverWatch – L Bracket 30/45